

## AILSG's International Centre of Equi-T & Inclusion for Transformation (ICEQUI-T)

Deeply committed to empowering underserved groups, AILSG has created its own programmes and innovations in addition to considering its field activities with them from a non-project perspective. The International Centre of Equity & Inclusion for Transformation [ICEQUI-T] has been given the specific performance criterion of "number of lives enhanced." Through its Corporate Social Responsibility Center, AILSG's ICEQUI-T aligns with the social sensitivities of many stakeholders, including corporations.

### SALIENT ACHIEVEMENTS:

**Lives Improved during the year 2021-22:** Through the grassroots field actions of AILSG's ICEQUI-T & its sub-centers, AILSG has enabled improvement in the lives 0.75 million under-privileged populations with special focus on women & children from rural, tribal & urban areas.

**Social Innovations to address diverse development issues on ground:**

**MY SDG[Mentoring Youth for SDGs:** Developing a cadre of local youth with special focus on women as 'development enablers at the grassroots' to accelerate the progress towards Sustainable Development Goals (SDGs) 2030.



**MY SDG 8[Mentoring Youth for SDG 8 - Future Ready Youth Enabling Inclusive Growth & Productive Employment with focus on under-privileged populations]:** With 'Youth' as a key driver for growth, empowering disadvantaged youth with skills training & vocational exposure in sync with their traditions and culture in tribal, rural & urban areas; financial literacy; digital literacy, etc. for enabling livelihoods.

## **'MY SDG 8: Building Capacities of Youth as Enablers for SDG 8'**



### **• Vision: •**

Future Ready 'Youth' Enabling  
Inclusive Growth and  
Productive Employment  
with focus on  
Under-privileged Populations.

Innovation by



'Corporate Social Responsibility Center'  
at 'International Center of EQUI-T'  
of 'All India Institute of Local Self-Government'

**MY Mental Health [Mentoring marginalised Youth for promoting Mental Health]:** The innovation addresses the hitherto neglected aspect of mental health of marginalised youth & mental health of women related to reproductive health & gender based violence through community-centric, socio-culturally sensitive, gender inclusive, youth-friendly approaches enabling participation & ownership of youth.

## **Enabling Mental Health for All: with focus on disadvantaged children.**



**World Mental Health Day 2021**



Innovation developed by  
All India Institute of Local Self-Government's "CSR Center"  
established at its International Center of EQUI-T

**SGD Advocates:** This initiative of AILSG's ICEQUI - T strengthens the capacities of individuals, particularly youth, as torchbearers for the SDGs. Based on an individual's social development ambitions and skill set, ICEQUI-T generates opportunities for them to gain hands-on experience with the developmental issue/s closest to their hearts, provides capacity building inputs, and channels their energies into real field activities. This enables the kids to see a direct connection between their efforts and the social transformation they may effect.



The following material elucidates the AILSG's exemplary initiatives and programmes rooted at its ICEQUI-T, particularly those encouraging global innovations that will have a substantial influence on advancing the SDGs with disadvantaged people. The emphasis here is on the disadvantaged since AILSG thinks that the effect generated with the underprivileged is a key test of progress toward the SDGs.

Furthermore, many of the development interventions are covered by initiatives that use AILSG's holistic development approach [for example, TARFAH for tribal and rural development].

AILSG is grateful to all support agencies for providing resources that allow them to make these little efforts to improving people's lives.



AILSG  
FOUNDED IN 1926

## All India Institute of Local Self-Government's 'Corporate Social Responsibility Center'

**is established at AILSG's 'International Center of EQUI-T'**

Children, Women, Youth, Adolescents,  
Differently Abled



Urban Slums, Rural, STs, SCs, Minorities,  
Nomadic Tribes, Other Discriminated

Field Actions, Innovations, Research

**Vision:**

**Synergising with CSRs  
to Enable Better World for the Disadvantaged**

CSR activities as mentioned under  
Schedule VII of the Companies Act, 2013, Govt. of India


Contact: [icequit@ailsg.org](mailto:icequit@ailsg.org) / [csr-centre@ailsg.org](mailto:csr-centre@ailsg.org)

AILSG's projects and programs towards attainment of these SDGs are anchored around its innovative model- TARFAH ["Transformative Actions for Rural Development, Food Security, and Agriculture & Health"]. Its recent and ongoing projects based on this innovation include:

- Five projects supported by TATA Rallis CSR in tribal areas of Raigad District of Maharashtra, Palghar District of Maharashtra, Narmada District of Gujarat, and non-tribal areas in Karim Nagar and Warangal districts of Telangana.
- One project supported by TATA Technologies CSR in Osmanabad District of Maharashtra
- One project supported by TATA Industries CSR in Raigad District of Maharashtra



**Enabling Innovations:  
On-field Schools 'with Children'**



BAL-TARFAH innovation by  
All India Institute of Local Self-Government's  
International Centre of EQUI-T



- One project supported by German organisations- Terra Tech and Aktion Deutschland Hilft- with nomadic tribes in Beed District of Maharashtra
- One project supported by HDFC CSR through which a Kaushalya Vikas Kendra is established in Mumbai for honing skills of slum dweller youth of Mumbai

The word 'TARFAH' is derived from a traditional musical instrument of the indigenous populations. The innovation brings the interventions in sync with the cultural preferences of the tribal and rural populations in appreciation of their closeness to the natural resources. Instead of superficially importing alien interventions from an urban perspective, the TARFAH model appreciates the unique significance of the local problems (and thus the solutions), custom-designs solutions, and implements them through community participation. In the process it builds sustainability mechanisms which takeover the baton of development from AILSG as a conscious well-designed process. The approach is firmly rooted in micro-planning process at the family and hamlet levels and then converging into the village-level processes.

### **The TARFAH Model of AILSG**

The TARFAH model offers a comprehensive and gender-sensitive solution to the issues of food security and subsistence. It combines shorter-term food security goals with longer-term sustainability enabling activities (tailored to the specific agro-ecological environment). By transforming their "wastelands" into fruitful orchards and through soil and water conservation, the TARFAH plan enables the tribals to significantly enrich their natural resources.

This strengthens the local primary sector, which then encourages the secondary and tertiary sectors, revealing more opportunities for landless and marginal landholders to earn a living, either directly (through the addition of value to the primary produce) or indirectly (due to improved local purchasing power).

The short term food security issues with the highly impoverished tribals are addressed through the activities of:

1) For landholder families: improved agriculture, improving crop productivity, cropping intensity & enriching cropping pattern, vegetable cultivation.





2) For landless families: appropriate livestock interventions such as poultry and Rural Non-Farm Sector interventions.



Long-term solutions are provided by proper horti-forestry interventions by landholder families and livestock and RNFS activities by the landless. Horti-forestry projects are complemented by proper soil and water conservation measures. Given that many rural and tribal people suffer extreme water scarcity beginning in December, water resource development is frequently carried out as one of the first activities, which also acts as a critical component of community mobilisation.



### **In-building Sustainability Enablers**

The in-built sustainability-enablers are in the form of:

- Fostering grassroots community institutions which take over baton of development of project
- Building local skills
- Intensive capacity building of community, especially youth
- Establishment of strong external linkages with markets and technology: to pre-empt exploitation, community facilitated for collective bargaining, get maximum return for their produce through fair practices
- Strengthening linkages with formal government machinery and Panchayati Raj Institutions [PRIs]



## Establishing linkages with formal Government machinery and Panchayati Raj Institutions

AIILSG works for awareness generation within the community about relevant government schemes and programs. This also builds confidence in the community to approach the government machinery overcoming possible psychological barrier. AIILSG's efforts on strengthening the supply side of services, i.e. the government machinery includes supporting the government to reach those who are difficult to reach and creating avenues at the grassroots for the interactions between the government agencies and the community.

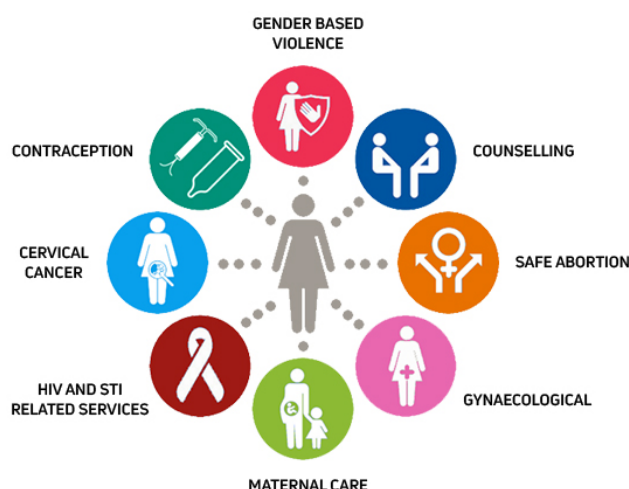
### Sustainable Development Goal No 3

While this theme is covered as an in-built constituent of all the projects, certain recent projects had this as a dedicated focus, which includes

- MUFG CSR supported project dedicated to enabling sustainable mental health support to 0,000 marginalized youth, minimum 50% of which will be women



- 'Creating Access to Comprehensive Sexuality Education for Blind Girls & Women from Developing Countries' under the aegis of 'Stars in Sexual and Reproductive Health and Rights 2019' by Grand Challenges Canada. The innovation also involves developing innovative capacity building tools for blind girls and women.



The COVID-19 pandemic pushed back progress made on 'good health & well-being' especially for the under-privileged populations.

More importantly the increase in gender-based violence, abuse & violence against children has further intensified health & well-being related challenges for the children & women in vulnerable situations. The worst sufferers of this were differently abled including visually challenged women & children which warranted urgent attention. The need for emerged as a first step to create awareness & impart knowledge about SRHE amongst differently abled women & children enabling their less vulnerability to exploitation & abuse. The innovation of audio-tactile 'Khushi' doll was conceptualised and developed under the aegis of Stars in Global Health Award 2019 by Grand Challenges Canada. A simpler version of it was also designed by the AILSG-ICEQUI-T team in such a way that an easily accessible and replaceable pen-drive within Khushi doll can be uploaded with audio-messages on wide range of health aspects, including SRHE, WASH & COVID-19. This innovation has a special significance as it will enable accessing information by visually challenged women & girls who are not 'braille-literate' and help in transcending socio-cultural taboo associated with imparting SRHE to all types of differently abled girls & women.

Another hitherto neglected health aspect came to fore is impact of COVID-19 challenges on Mental Health which has emerged as a shadow pandemic. Further, impact of gender-based violence, women's reproductive health on women's mental health is often ignored & is still highly neglected. The key aspect related to Mental Health is 'stigma and taboo' associated with it. Also, there is a dearth of mental health services & approaches which are community-centric, socio-culturally sensitive, gender inclusive, youth-friendly making it more accessible & acceptable to youth, enabling participation & ownership of youth. The innovation of 'Mano-Swasthya Ranjan Kendras' initiated within community supported by MUFG Bank Ltd. CSR are addressing this by engaging 10,000 marginalised 'Youth', including those from indigenous 'Siddi Tribes' of African origin thus facing high stigma & discrimination, Scheduled-tribes and marginalized youth from urban slums from the states of Maharashtra, Delhi, TamilNadu and Karnataka. AILSG's trained grassroots team members were also part of Gram Aarogya Suraksha Dal (community organisation at the village level) have supported government's COVID-19 related relief work.





COVID-19 has highlighted importance of immunity-enablers and nutrition. The nutritional status, especially of disadvantaged children and women, has otherwise taken a big hit. AILSG pre-empted this by furthering its MAMTA (Movement Against Malnutrition for Transformative Actions) movement to many more. This involves enabling plantation of nutritious kitchen gardens by location-customized vegetables and herbs. This was further augmented by developing AILSG's innovation of herbal gardens, with 3 sub-types of it.

## MAMTA

(Movement Against Malnutrition with Transformative Actions)

A Movement by

All India Institute of Local Self-Government's International Center of EQUI-T

Vision:

Enabling Nutrition for Disadvantaged Children to Ensure their Best Start in Life




## ममता

(कुपोषण- निर्मूलनासाठी चळवळ आणि परिवर्तनाच्या क्रिया)

वंचित मुलांच्या जीवनाच्या सर्वोत्तम सुखासाठी उत्तम पोषण

### Sustainable Development Goal No 4

While this theme is covered as an in-built constituent of all the projects, certain recent projects had this as a dedicated focus, which include one project each supported by the:

- MUFG Bank CSR at 140 slum locations in Mumbai, Chennai, Delhi and Bengaluru
- National Stock Exchange Foundation in 51 villages in Nandurbar District of Maharashtra
- HDFC Bank CSR at 40 tribal locations in Palghar District of Maharashtra
- Kotak Mahindra Bank CSR in 4 Schools of Ratnagiri District in Maharashtra
- EagleBurgmann CSR in 1 slum location



The inequality in education exacerbated during COVID 19 pandemic due to disruptions in education and digital divide in education which disproportionately impacted the underprivileged children the most. Below are the activities covered under Sustainable Development Goals 4:



- The AILSG-ICEQUI-T's innovation of 'Children Resource Centers'(also referred as 'Shikshan Ranjan Kendras') nested in the community enabled continuity of teaching-learning, enriched learning environment with quality teaching-learning inputs, improvement in WASH behaviour and holistic personality development for the underprivileged children from diverse settings of urban slums, rural & tribal areas and for hard-to-reach Denotified & Nomadic Tribes' children.

## शिक्षण रंजन केंद्र

‘ शिक्षणाचा हक्क, शिक्षणाच्या दर्जाचाही हक्क आणि  
“आपत्ती व शोषणापासून” सुरक्षिततेचा हक्क ’



## Shikshan Ranjan Kendra

‘Right to Education with Right Education,  
Right to Protection from Disasters & Exploitation’



संपर्क : शेटा नेशनल सेंट्रल ऑफ इन्फॉर्मिटी, अखिल भारतीय स्थानिक स्वशासन संघ,  
4 वा मजला, विनायक मेमोरियल, फेज - 2, 'पुन' विट्ठल, कोथरुड, पुणे - 411 038  
Contact : International Center of EQUI-T, All India Institute of Local Self- Government,  
4th Floor, L- Building, Pinnac Memories, Phase II, Kothrud, Pune - 411038

- To establish/ foster role models for the Girl's education, it is ensured that more than 50% Education Mentors (Shikshan-Mitras) are educated local women.





- These Children Resource Centers have been instrumental to bring learning at children's doorstep, provide equal opportunity for learning, play & safety to children.





- The focus has also been on anchoring education & learning of children nested in their local context which is relevant to their lives, both culturally and academically. For example, the innovation of 'BHASHA-SETU' (i.e., bilingual teaching learning material) is developed to overcome the language barrier faced by the tribal children.



## Sustainable Development Goal No 5

AILSG believes that gender equality in real terms cannot be enabled through theoretical discourses and seminars. The AILSG's field actions foster gender equality through the following fundamental tenets:

- Creating provisions for women-anchored livelihoods activities.
- Special focus on women-headed families.
- As decision makers in the grassroots community institutions, it is mandatory to have participation of minimum 50% women in hamlet-level committees and 50% girls in Bal Panchayats.





- In skills-training, financial-literacy, digital-literacy: minimum 50% of participants are women- overcomes gender-stereotyping.
- Promoting women friendly appropriate technologies: e.g. modified sickle, water fetcher, etc.
- Inculcating pro-gender-equality mind-set in all right from young age. Thus, emphasis on girls as equal decision makers in Bal Panchayats goes a long way in enabling this.
- Women from the Indigenous tribes are at the forefront of the community development interventions including on hitherto neglected aspect of women's mental health related to their reproductive health & gender based violence.
- The innovation of enabling Mental Health will be initiated with more than 5000 disadvantaged women, including those from highly marginalised, stigmatised& discriminated indigenous 'Siddi' tribes who are of African descent
- There is a conscious focus on developing a cadre of women as 'SDG- Enablers'/ development – enablers at the grassroots. The ICEQUI-T will launch MY SDG 5 [Mentoring Youth for SDG 5] during FY 2022-23.

### **Sustainable Development Goal No 6**

AILSG's ICEQUI-T innovations on this count bridge a crucial prevailing gap- enabling the disadvantaged populations to self-assess, plan and proactively seek participation of other stakeholders in improving status. AILSG has developed simple visual tools, even understandable by illiterates- thus enabling their participation in community self-assessment and planning. The community ownership and accountability built through this process has proved to be very crucial for sustainability.



WASH initiatives includes-

- Behaviour change communication within community through edu-tainment by using creative medium of street plays, puppet shows, awareness rallies,
- Innovation of Khushi doll to convert WASH and COVID-19 Appropriate Behaviour [CAB] messages in audio to visually challenged children [promoted also in collaboration with Save the Children]. Developing a tactile tool 'Corona-Har Taal' to enable follow -up by self on adoption of safe WASH practices for by the visually challenged themselves.
- COVID-19 hygiene kits to foster adoption of COVID-19 appropriate behaviour and improved WASH behaviour.



- Developing a cadre of 'Bal Panchayats on WASH' to convey WASH and CAB messages in the community.



- Improving access to WASH services through construction and repair of toilets, enabling access to water through water and soil conservation measures

### **Sustainable Development Goal No 13**

- AILSG is proactively putting into practice the innovations on climate action front which were felicitated with the United Nations Risk Award 2015.
- They are dovetailed with its innovation of 'Community Self-Assessment and Planning with Women's Participation for Disaster Risk Reduction of Vulnerable Communities'.
- These have been supplemented recently with the launch of the HDFC Bank Corporate Social Responsibility tree plantation drive for carbon neutrality launched in the AILSG's tribal field action area in Palghar District.
- Moreover, AILSG is in the process of launching its innovation of "Rejuvenating indigenous trees for carbon neutrality" in its tribal and rural development field action areas.



### **Regional Centre for Urban and Environmental Studies, Mumbai**

RCUES of AILSG Mumbai conducted the following Regional Specialised Training Programmes which were supported by Ministry of Housing & Urban Affairs, Government of India during the year 2020 to 2021:

#### **Regional Specialised Web-Based Training Programmes:**

RCUES of AILSG Mumbai conducts capacity building programmes for States of Goa, Gujarat, Maharashtra, Rajasthan, Assam and Tripura and UTs of Diu, Daman, Dadra and Nagar Haveli and Lakshadweep. 24 regional web-based training programmes, 4 regional face to face training programmes and 2 regional webinars were conducted in the FY 2021-22.